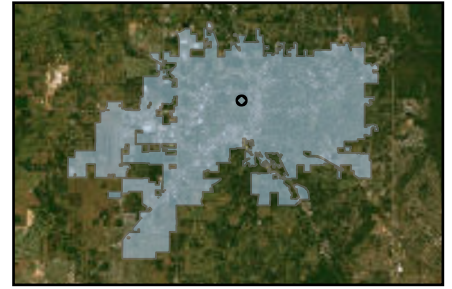
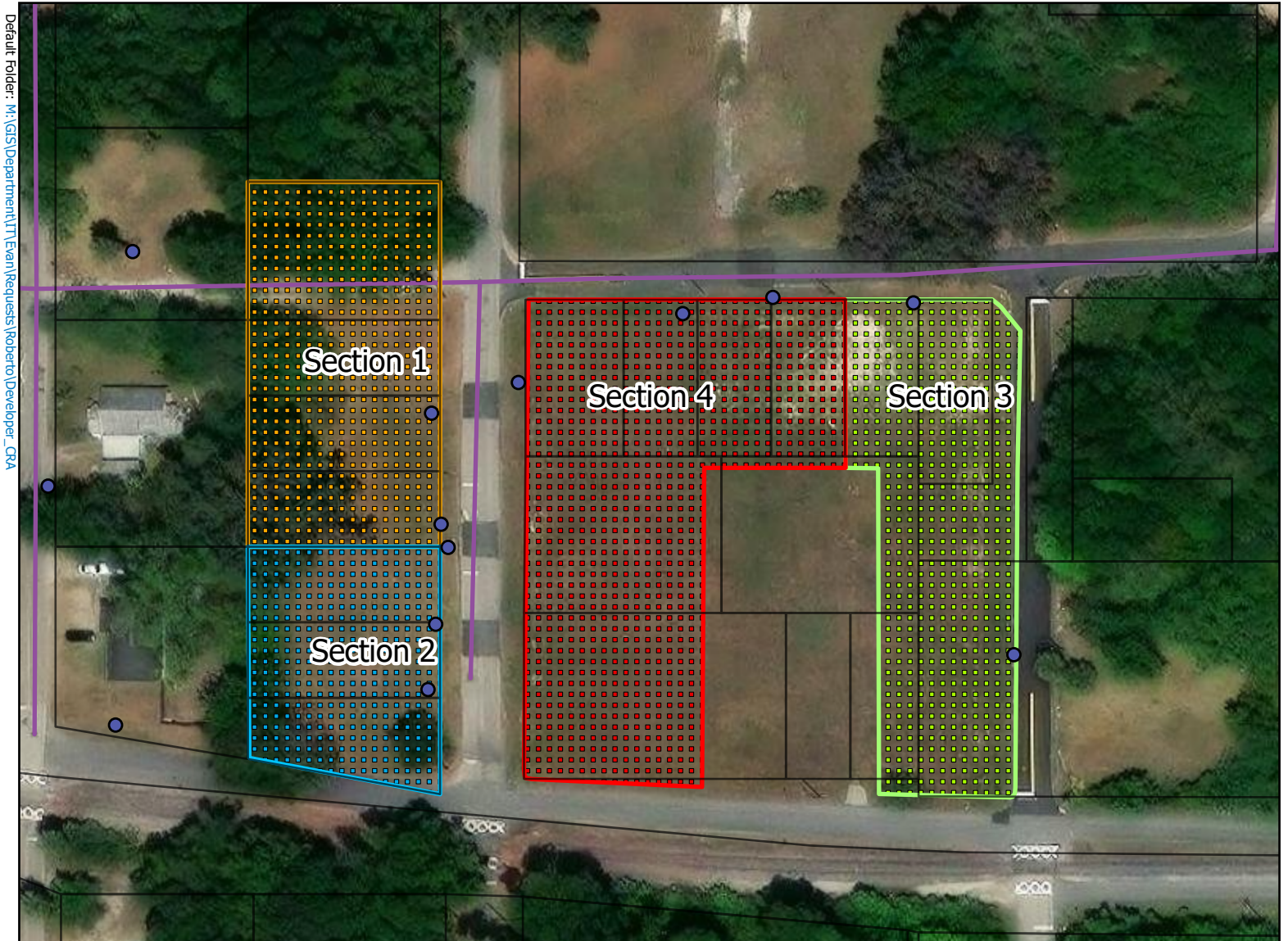


# MAP

**Property Size:** Approximately 2.01 Acres  
**Land Use Designation:** Neighborhood  
**Zoning:** R-2, Two-Family Residential  
**Description:**  
**Purpose:**



The purpose of the maps is to show potential developers the size, location, zoning and available utilities.



Default Folder: M:\GIS\Department\IT\Exam\Requests\Roberto\Developer\_OCA

- Water Service Connection
- ▭ Parcels
- Gravity Main

